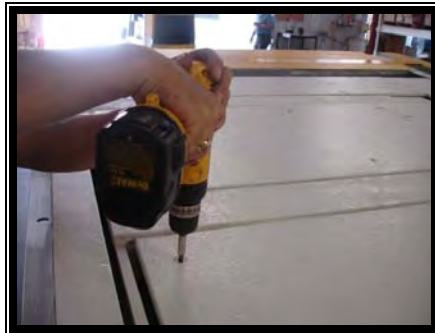


Attachment 1, Quarterly Maintenance Checklist

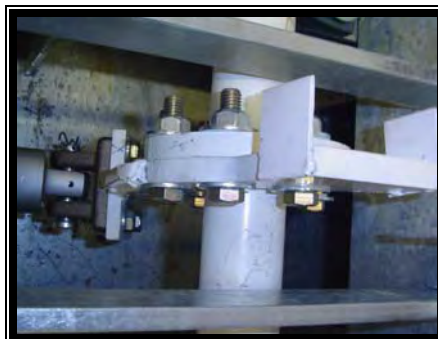
Make copies of this check list for each quarterly maintenance and maintain for Warranty purposes

Customer:	Location:
Date of Installation:	Required Quarterly Maintenance:
Unit Serial #	
Unit Model #	
Voltage –	

1. Turn power on to unit check for proper voltage.
2. Check operation of unit. Operate 10 to 12 times. Ensure that the bollards operate smoothly (3 seconds).
3. Make sure the Vehicle Barrier is in the closed (down) position and power is turned off.
4. Place necessary traffic safety cones to insure worker safety.
5. Remove Access Plates. Using a cordless drill with a #45 Torque Head bit, remove the bolts from the middle access plate (large one). After all bolts are removed move the access plate from the barrier.



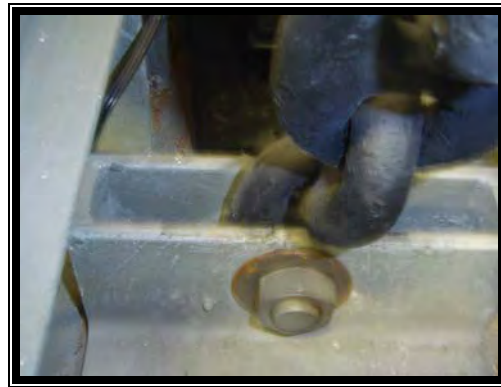
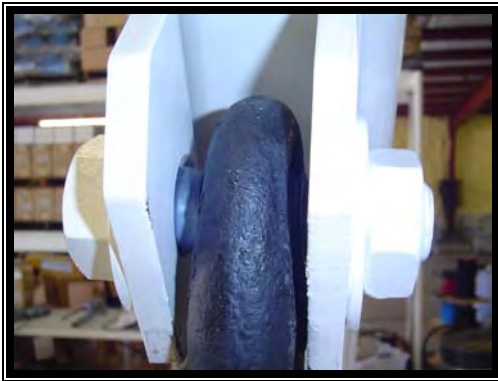
6. Check Actuator brackets. If these connections are not kept tight, it might cause loose motion that could result in excessive wear. Spray with Chain Lubricant with Moly.



7. Check Actuator seals/nuts. The electromechanical actuator is packed in grease and the seals must remain in place and clean.



8. Check Chain Bolts. If these connections are not kept tight, it might cause loose motion that could result in excessive wear.



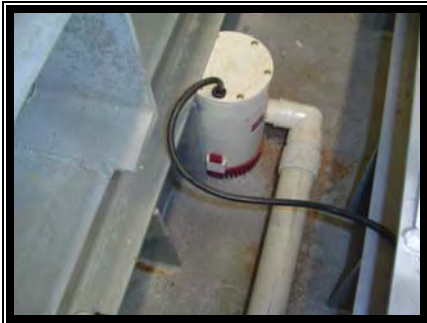
9. Check reflectors and strobe lights. Look for damage or improper operation.
10. Check Split Journal Bearing Bolts. Make sure these are tight. A loose fit might cause excessive wear and improper bollard operation.



11. Check and Grease Split Journal Bearings. Use a standard bearing grease in a grease gun applying grease until it is visible at any point along either edge of the bushing and the shaft.



12. Check all painted parts and touch up as needed.
13. Check non-skid coating and touch up as needed.
14. Check sump pump and drainage ports (if applicable). Make sure that the drain ports and/or sump pump are clear of debris and the sump pump operates properly. Check 2-minute sump pump cycle (automatically turns on every 2 minutes and shuts off if dry)



15. Check the unit interior for dirt and debris. Remove as necessary.



16. Replace the Access Cover Plates and bolts and remove traffic safety cones.
17. Report any deficiencies to the on site supervisor.
18. Complete this checklist, maintain a copy in files and forward a copy to RSSI.

